

Levy Rates Presentation

Special Meeting February 21, 2023



#Washougal *Rising*

Current Reality - Levy Failure: February 14, 2023

Total Number of Registered Voters in Washougal: 16,897

*Unofficial Results for Clark County & Skamania County

- **EP&O Levy**

- 47% Yes (total 2,481 votes)
- 53% No (total 2,852 votes)
 - Number needed to pass: **371 votes**

- **Capital Levy**

- 47% Yes (total 2,425 votes)
- 53% No (total 2,748 of votes)
 - Number Needed to pass: **323 Vote**



#Washougal *Rising*

Levy Facts

- **Not a New Tax - Replaces Expiring Levy**
 - EP&O and Capital Levy taxes are part of a homeowner's current mortgage.
 - Tax payers are already paying these taxes.
- **State Does Not Fully Fund Washougal SD**
 - WSD Special Education funding shortage: \$2 Million
 - WSD School Nurse funding shortage: \$253,389
- **No Levies = Significant Reductions**
 - 18% of our Operating Budget comes from levies
 - Reduction to staff, programs, services

#Washougal *Rising*



Are There Other Financial Solutions?

No. Levy funding fills a gap unmet by state and federal funds. The following sources are either already designated for other critical needs or **cannot** be used to pay for levy funded programs:

- **ESSER Dollars** (\$ 4.9 M):
 - [ESSER \(COVID-19\) Related Spending Link](#)
- **Reserve: General Fund**
 - District's One-Time Savings Account For Emergency: [2022-23 Budget Presentation Link](#)
 - \$5.1*M (10%): District Policy is 6% & bond rating agencies say 10% is goal
- **Impact Fees**
 - Can **only** be used to build new spaces or purchase property
 - When we have enough room for all of the current students, we can't collect additional impact fees
 - [WSD Capital Facilities Plan \(CFP\)](#) & [RCW 82.02.050](#) and [RCW 82.02.090](#)
- **Some Money Can ONLY Be Spent on Specific Expenses**
 - ASB, Debt Services, Capital Projects, and Transportation Vehicle Fund **cannot** be used to support levy-funded programs, staff and services: [2022-23 Budget Presentation Link](#)
- **District Assets**
 - Bus Garage: Used for Operations: [2022 Assessed Value Link](#): \$332,310
 - Kerr Property: [2022 Assessed Value Link](#): \$2,757,983



Potential Double-Levy Failure

2023-24 Budget Reduction Plans

EP&O Levy Failure Reductions

- Staffing
- Programs
- Services
- Other: Consolidation of Schools?

Capital Levy Failure Elimination

- Technology Devices
- Technology Software & Infrastructure Support Services
- Technology Professional Development
- Facilities Modernization



#Washougal *Rising*



Budget Challenges NOT Connected to Failed Levies

2023-24 Budget Development Process Has Begun

Enrollment Decline Projections 2023-24

Lower by 40 FTE Projected for 2023-24 [2022-23 Budget Presentation Link](#)

Contributing Factors:

- Lower Birth Rate
- Large Classes Graduating
- COVID Loss of Enrollment

Reduction Planning Considerations:

- Retirements
- Resignations
- One-Year Only
- Non-Renewal
- RIF

Home School Information

Year	Students
2018	115
2019	133
2020	118
2021	182
2022	195
2023	190

#Washougal *Rising*



EP&O Reductions Due to Levy Failure

*Reductions will occur in accordance with collective bargaining agreements

Staffing Position Reductions	State Funded	Unfunded
Extracurricular (Athletics and Clubs) - 155 positions	0%	100%
Health Care (Nurses & Health Room Assistants)	25%	75%
Secretarial & Office Support	53%	47%
Central and Building Administration	42%	58%
Paraeducators	82%	18%
School Counselors	61%	39%
Facilities/Maintenance/Warehouse/Custodial	28%	72%
Classroom Teachers	76%	24%
Librarian Staff	60%	40%
Substitutes (Teachers and Classified)	9%	91%

#Washougal *Rising*



Reductions Due to Levy Failure

Additional Programs and Services Reductions

Bussing Services and Routes

Curriculum, Turf and Deferred Maintenance Set-Asides

Building and Program Budgets

Employee Travel

Transportation to Practices, Games, Field Trips and Activities

Services Contracts (i.e. PLC, AVID, Copier Machines, Drug Prevention/Intervention)

Family Community Resource Centers

#Washougal *Rising*



Reductions Due to Levy Failure

Additional Programs and Services Reductions

Athletic Programs & Extracurricular Activities

Fine Arts Programs (Drama, Band, Choir and Elementary Music/Art)

Summer School

Community Services (i.e. Community Preschool)

Behavioral/Intervention & staff and Student Support

Professional Development

Campus Security Services

#Washougal *Rising*



Capital Levy Reductions Due to Levy Failure

Technology and Modernization Eliminations

Educational Technology Device Replacement Schedule

Educational Technology Infrastructure

Education Technology Staffing

Modernizing Flooring

Roof Repairs and Replacement

Boiler Replacements

Security Door Upgrades

#Washougal *Rising*



Educational and Operations Levy Options

- Resubmit EP&O Levy without changes
- Resubmit EP&O Levy with tax rate of \$1.89
- Resubmit EP&O Levy with tax rate of \$1.85
- Do Not Resubmit



#Washougal *Rising*



Option 1: EP & O Levy Rates

(same as what board approved November 2022 and presented to voters 2-14-2023)

Tax Collection Year	EP&O Levy Collection	Rate per \$1,000 AV
2024	\$9,500,000	\$ 1.99
2025	\$10,500,000	\$ 1.99
2026	\$11,500,000	\$ 1.99

Support staff, services and programs.

Invest in early learning, dual language, and STEAM opportunities.



#Washougal *Rising*

Option 2: EP & O Levy Rates at \$1.89 (reduction of \$.10 from 2-14-2023 proposition)

Tax Collection Year	EP&O Levy Collection	Rate per \$1,000 AV
2024	\$9,050,000	\$ 1.89
2025	\$9,950,000	\$ 1.89
2026	\$10,950,000	\$ 1.89

Approx. \$525K/year
in lower levy
collections

Would necessitate
reductions to:

- Staff
- Services
- Programs



#Washougal *Rising*

Option 3: EP & O Levy Rates at \$1.85 (reduction of \$.14 from 2-14-2023 proposition)

Tax Collection Year	EP&O Levy Collection	Rate per \$1,000 AV
2024	\$8,850,000	\$ 1.85
2025	\$9,750,000	\$ 1.85
2026	\$10,700,000	\$ 1.85

Approx.
\$733K/year in
lower levy
collections

Would necessitate
additional
reductions to:

- Staff
- Services
- Programs

#Washougal *Rising*



Next Steps

- Take Board action and submit resolutions to the elections office by 2/24/23 if proposing for the April 25, 2023
- Facilitate listening tours and surveys for budgetary input based on the impact from the Levy (late Feb/March)
- Meet with leadership on staffing decisions to make any adjustments. Board approval and notice to staff required prior to May 15th



Capital Levy Options

- Option 1: Capital Levy without changes
- Option 2: Resubmit Capital Levy with tax rate of: (full support of technology, and selected modernizations)
 - \$0.21 for 2024
 - \$0.45 for 2025
 - \$0.38 for 2026
- Option 3: Resubmit Capital Levy with tax rate of \$0.21 (full support for technology only)



Option 1: Capital Levy Rates (as proposed to voters 2-14-2023)

Tax Collection Year	Capital Levy Collection	Rate per \$1,000 AV
2024	\$950,000	\$ 0.21
2025	\$3,950,000	\$ 0.84
2026	\$4,150,000	\$ 0.85

Supports

- Educational Technology initiatives (\$950K)
- DDC Controls (\$550K)
- Boiler Replacements (\$760K)
- ADA Access for all Entrances (\$275K)
- Security Door Upgrades (\$735K)
- WHS roof project (\$3.6M)
- Flooring modernization (\$280K)



Option 2: Capital Levy Rates (Modified option with some modernization projects)

Tax Collection Year	Capital Levy Collection	Rate per \$1,000 AV
2024	\$ 950,000	\$ 0.21
2025	\$2,385,000	\$ 0.45
2026	\$2,185,000	\$ 0.38

Supports

- Educational Technology Initiatives (\$950K)
- Heating and Cooling - 2025 Yr
 - DDC Controls (\$550K)
 - Boiler Replacements (\$760K)
- Security Infrastructure - 2026 Yr
 - ADA Access for all Entrances (\$275K)
 - Security Door Upgrades (\$735K)

Postpones

- WHS roof project (\$3.6M)
- Flooring modernization (\$280K)



Option 3: Capital Levy Rates (Continues Technology Levy, and postpones all other projects)

Tax Collection Year	Capital Levy Collection	Rate per \$1,000 AV
2024	\$ 950,000	\$ 0.21
2025	\$1,085,000	\$ 0.21
2026	\$1,200,000	\$ 0.21

Supports

- Educational Technology initiatives (\$950K)

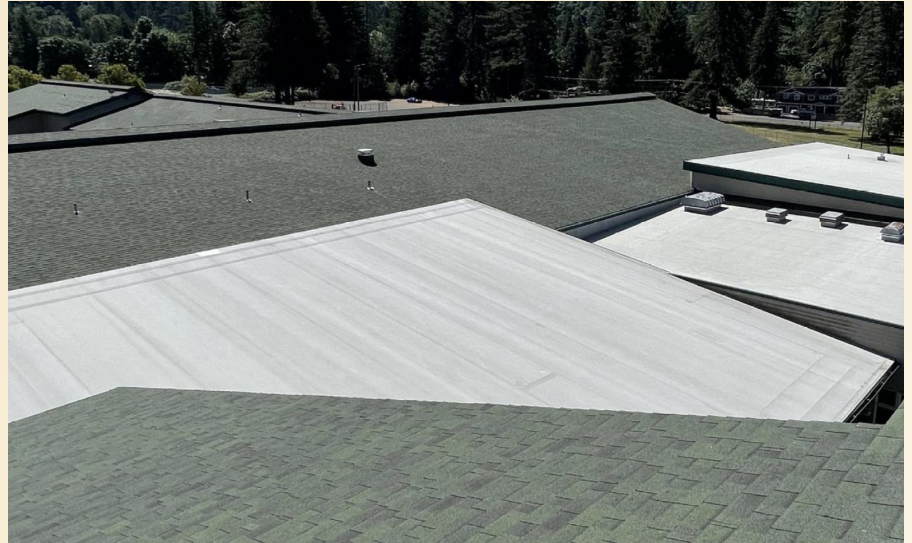
Postpones

- DDC Controls (\$550K)
- Boiler Replacements (\$760K)
- ADA Access for Entrances (\$275K)
- Security Door Upgrades (\$735K)
- WHS roof project (\$3.6M)
- Flooring modernization (\$280K)



Next Steps - Capital Project Levy

- Request Board action and submit resolutions to the elections office by 2/24/23
- Facilitate Listening Tours and Surveys for budgetary input based on the impact from the Levy (resubmission of Capital Projects Levy)



Reflections

- Listening & Learning

- Continue Board Communication/Availability (email, phone calls, visibility, board meeting public comment: ER 12)
- Board Listening Tours
- Principal Learning Evenings
- Community Surveys

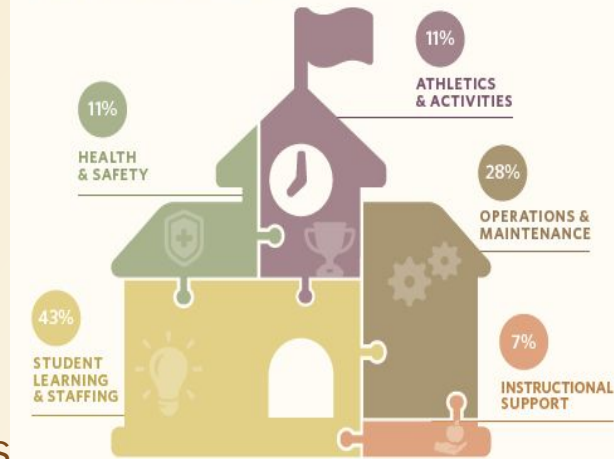
- Planning

- Plan for Cost Reductions Needed to Balance Budget
- Seek Stakeholder Input on Priorities

- Commitment

- Healthy Schools - Healthy Community - Bright Futures

The EP&O Levy supports...



#Washougal Rising

Opportunities to Share Input

Online Survey - The District is encouraging individuals to complete the survey that is available on our website at www.washougal.k12.wa.us

Board Listening Tours - Board members and district leaders will be available to listen and respond to individuals who want to share their thoughts. Dates will be shared for opportunities in March and April.

Email/Phone Communications: to Board and Superintendent/Leadership

School Board Meetings - Individuals can share comments with the board at the following board meetings:

- February 28 @ 6:30 p.m.
- March 28 @ 6:30 p.m.
- April 25 @ 6:30 p.m.

#Washougal *Rising*

